



2006 Awards

2006 Awards

OCHBA 2006 - Best Basement Design

Our Client's 1185 square foot basement had yet to be finished and with 8' height ceilings, they realized the potential that this space had to be the spot in Orleans - for entertainment and that is exactly what this basement became.

We designed a multifunctional space complete with a games room and bar, a soundproof home theatre, a powder room and a wonderful gym. We wanted to design a space that was open, bright and visually interesting with lots of built-in detail to catch the eye.

Curved lit cove bulkheads hid the mechanical, and posts were incorporated into built-ins and niches where ever possible. The challenge with most basements is incorporating posts, beams, mechanical and plumbing in such a way that makes them disappear.

The curved, lit cove in the games room not only adds interest to the ceiling line but it also adds height. In the Theatre, the lit coves add ambiance – the perfect viewing atmosphere.

The custom glass countertops created by **Delfina Falcao** adds a certain je ne c'est quoi that catches the eye of most guests. To further add to the visual interest we incorporated several lit drywall niches, custom millwork, a glass block partition and a strongly contrasting color palette - all components that when combined create the whole.

A basement need not look like a basement...



OCHBA 2006 - Renovation Under \$40,000

Our Clients home was in desperate need of an interior facelift. As this project clearly proves, a small budget can go along way!

Our Client wanted to open up their living space and most importantly make the fireplace deserving of the focal point that it was. To achieve this feat within our given budget, we kept the existing fireplace structure, including the wood burning fireplace (only adding a new screen) and designed on top of it.

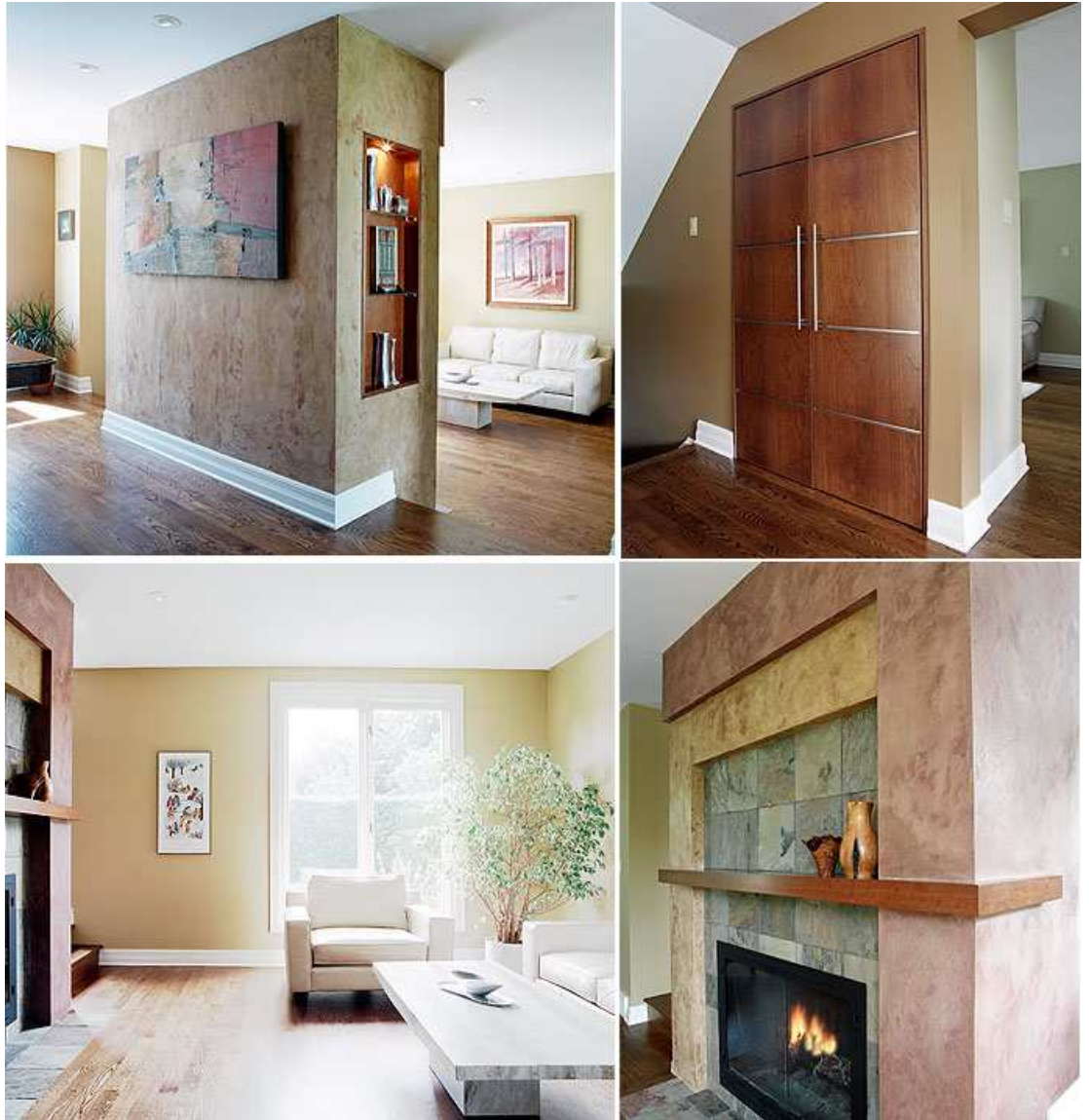
Our design, with strong geometric lines is an asymmetrical balance of faux finished drywall at different depths, a lit cherry niche, slate and a 3" thick, self supporting cherry mantle that wraps the far corner drawing the eye up into the dining room.

To complete our transformation we replaced the well-worn wall to wall carpeting with hardwood and removed the

partition between the dining room and entry drastically improving the open concept floor space.

The antiquated accordion closet door was replaced with custom cherry panel doors and stainless steel reveals in the same finish as the mantel. Finally, new lighting was incorporated into the design and all was complete.

A contemporary, open concept living space with a very strong focal point – a funky, asymmetrical fireplace... What a facelift!



OCHBA 2006 - Best Custom Bathrooms over 75 sq. ft.

Our Clients wanted a sleek, contemporary, clean lined bathroom that would leave a lasting impression. Accustomed to living in a Toronto loft, we needed to transform their 60's split Bungalow into a flexible space with room to entertain, or just to contemplate.

The design needed to be unconventional yet functional.

The transformation started by claiming the guest room adjacent to the master bedroom. We created a subtle division between the two by allowing for a large 45" wide barn door as the separation between the two rooms. We also doubled the size of the existing window to allow for a large amount of light to penetrate the space.

Strong geometry was key to this space. The floating lacquer vanity is framed by a 3" thick asymmetrical concrete counter. A 48" rectangular, 2 person sink is balanced by the floating 48 x 48 medicine cabinets made of walnut. In order to create the unconventional while maintaining the functional, the cabinet storage is accessed by side pull-outs - his and her. The elevation is completed by the addition of 3 walnut niches above the toilet.

The tub deck/shower enclosure also creates a strong statement. The tub deck, made of concrete supports the 'vessel' tub, which sits 4" above the deck. For the moments of contemplations we added a recessed plasma tv above the tub for viewing pleasure. The bold statement made by the grey-toned polished concrete is balance by the cream, polished 12x24 tiles in the shower.

Of course in an open concept design well thought out storage is a necessity. We designed a floor to ceiling, wall to wall storage unit consisting of 15x15 walnut, flat panel doors. We rotated each panel a quarter turn to create a basket weave grain design. A small detail with large impact. Functionally, the base cabinet of this unit houses a large laundry pull-out that can be accessed by the adjacent laundry room!

A perfect example of a design where the sum of the parts create the whole - Asymmetrical in nature while creating a perfect balance.



OCHBA 2006 - Renovations between \$100,000 & \$250,000

Our Clients wanted a sleek, contemporary, clean lined home that would leave a lasting impression. Accustomed to living in a Toronto loft, we needed to transform their 60's split Bungalow into a flexible space with room to entertain, or just to contemplate.

The design needed to be unconventional yet functional.

The transformation started by removing most of the interior partitions and re-working the floor plan such that the end result would be reminiscent of a loft space. The existing home was quite dark. We needed to bring more natural light into the space. This requirement resulted in the only external design change. The addition of several large windows and the addition of a sleek, contemporary, walnut front door. With these structural design changes in place we began layering the interior detail – the key was to be unconventional while maintaining function.

Our design palette consisted of natural walnut, mat lacquer, mat and polished oversized cream porcelain tile and a subtle but strong colour palette. We played with these elements throughout the home in different proportions. The entrance sets the stage. Large glass/walnut barn doors separate the entry from the vestibule. Walnut niches flanked the entry to the living room, framing it's entrance – making it more dramatic. Functionally, one niche acts as a catch all for mail and keys. Everything has to have a place...

By enlarging the opening to the kitchen, hints of lacquer and walnut can also be seen from the entrance. There are many subtle details to catch the eye while maintaining a sense of upbeat tranquility.

A dramatic design change to the ground floor aside from the entrance and the removal of the partition between the dining room and kitchen, was the addition of 17' of windows on two remaining exterior partitions of the dining room. The 2nd level, originally a 4 bedroom layout was converted into a two bedroom design. We opened up the long, dark corridor by removing a partition and transforming the bedroom into a sitting room. The existing bathroom was converted into the laundry room, and another bedroom became a large sleek bathroom – a combination of walnut, lacquer and concrete.

While the exterior of this home was left relatively untouched, the main focus of this renovation was on the interior... The transformation of a 60's split into a contemporary 'loft'

A perfect example of a design where the sum of the parts create the whole - Asymmetrical in nature while creating a perfect balance.

